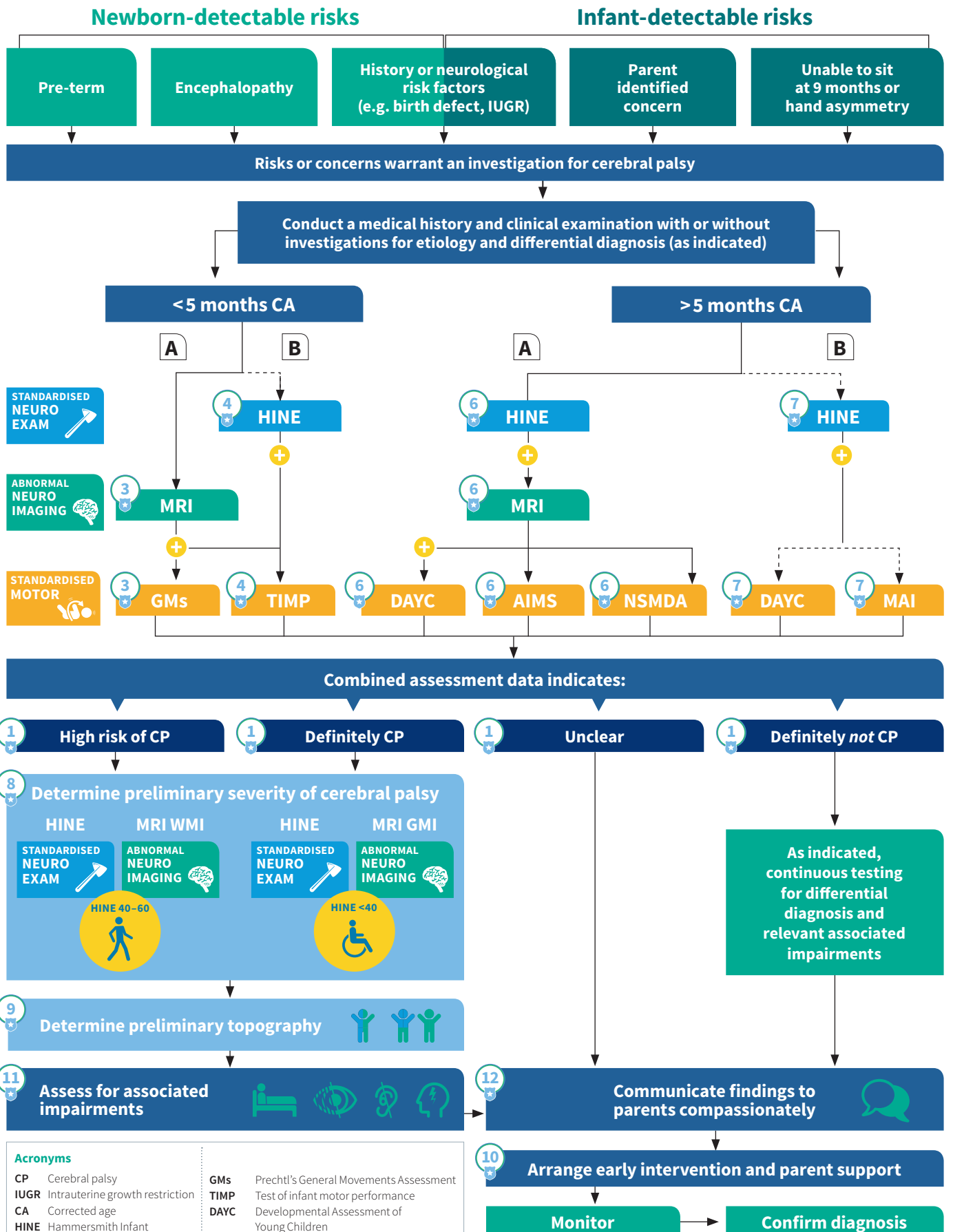


Algorithm for early diagnosis of cerebral palsy or high-risk cerebral palsy

A Best available evidence pathway

B Next best available evidence pathway when some pathway A tools are not available



Acronyms	
CP	Cerebral palsy
IUGR	Intrauterine growth restriction
CA	Corrected age
HINE	Hammersmith Infant Neurological Examination
MRI	Magnetic Resonance Imaging
WMI	White matter injury
GMI	Grey matter injury
GMS	Prechtl's General Movements Assessment
TIMP	Test of infant motor performance
DAYC	Developmental Assessment of Young Children
AIMS	Alberta Infant Motor Scale
NSMDA	Neuro Sensory Motor Developmental Assessment
MAI	Motor assessment of infants

Adapted with permission from: Novak et al 2017. Early, Accurate Diagnosis and Early Intervention in Cerebral Palsy. *JAMA Pediatr.* 2017;171(9): 897-907. doi:10. 1001/jamapediatrics.2017.1689 Available from: <http://jamanetwork.com/journals/jamapediatrics/article-abstract/2636588>